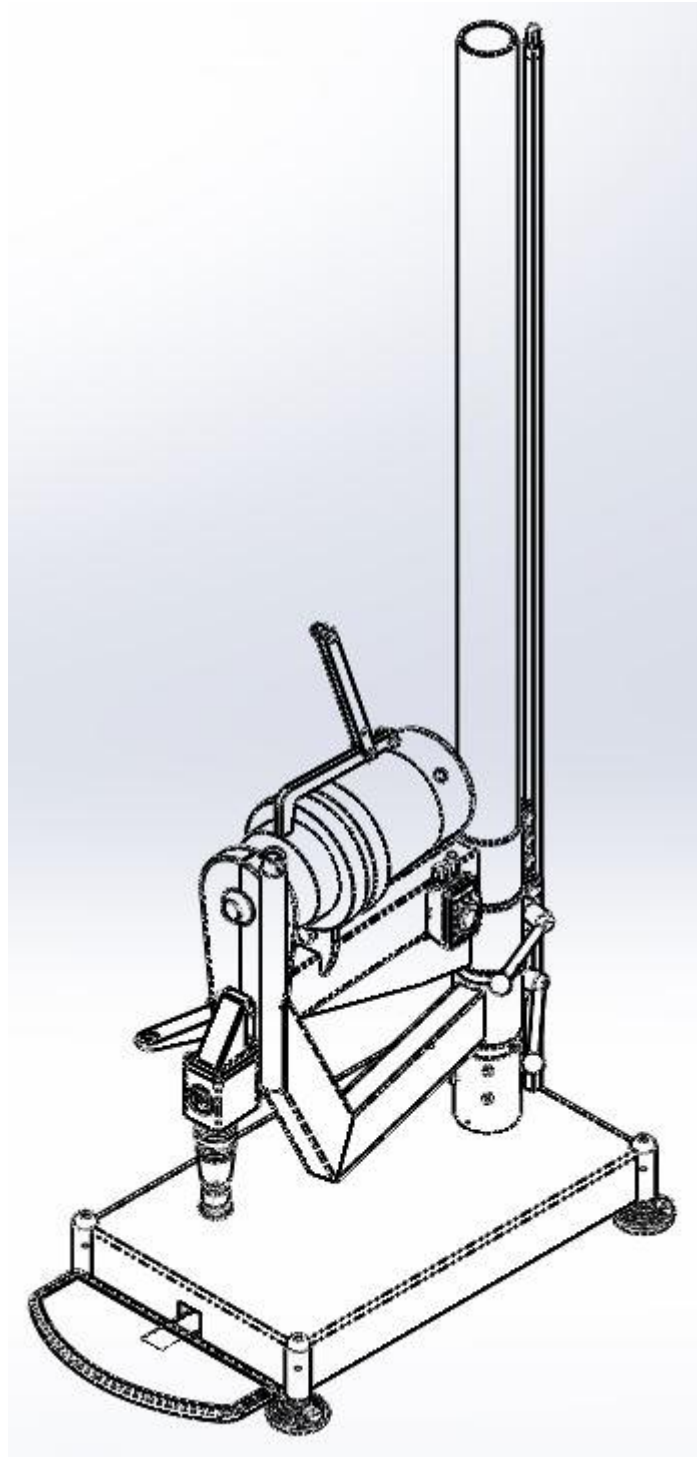
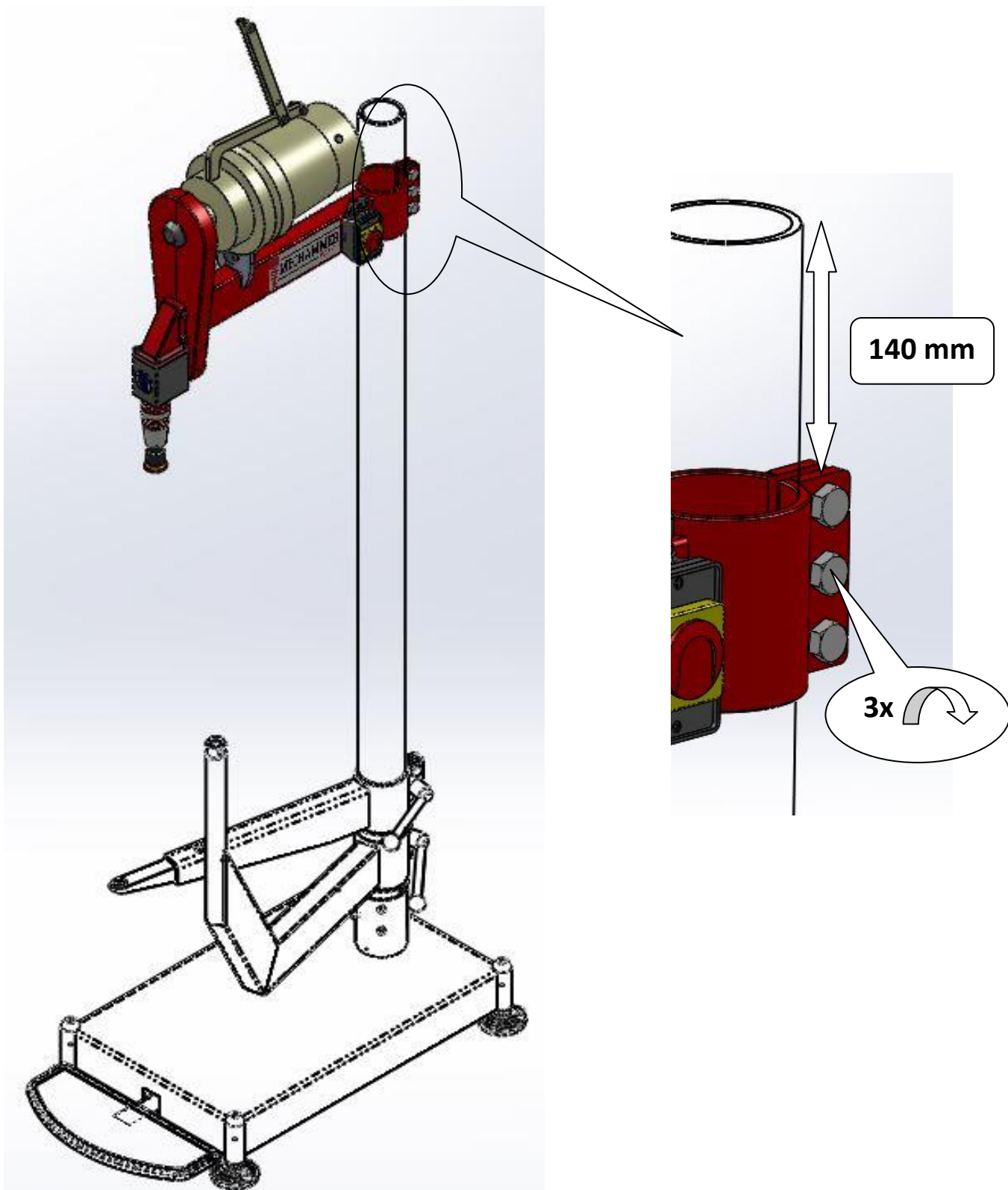




## 1 Unpacked Mechammer

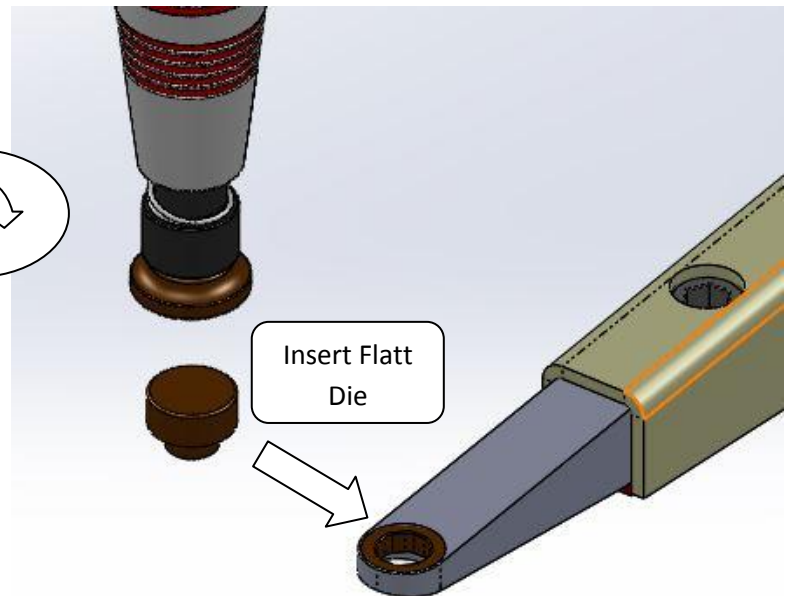
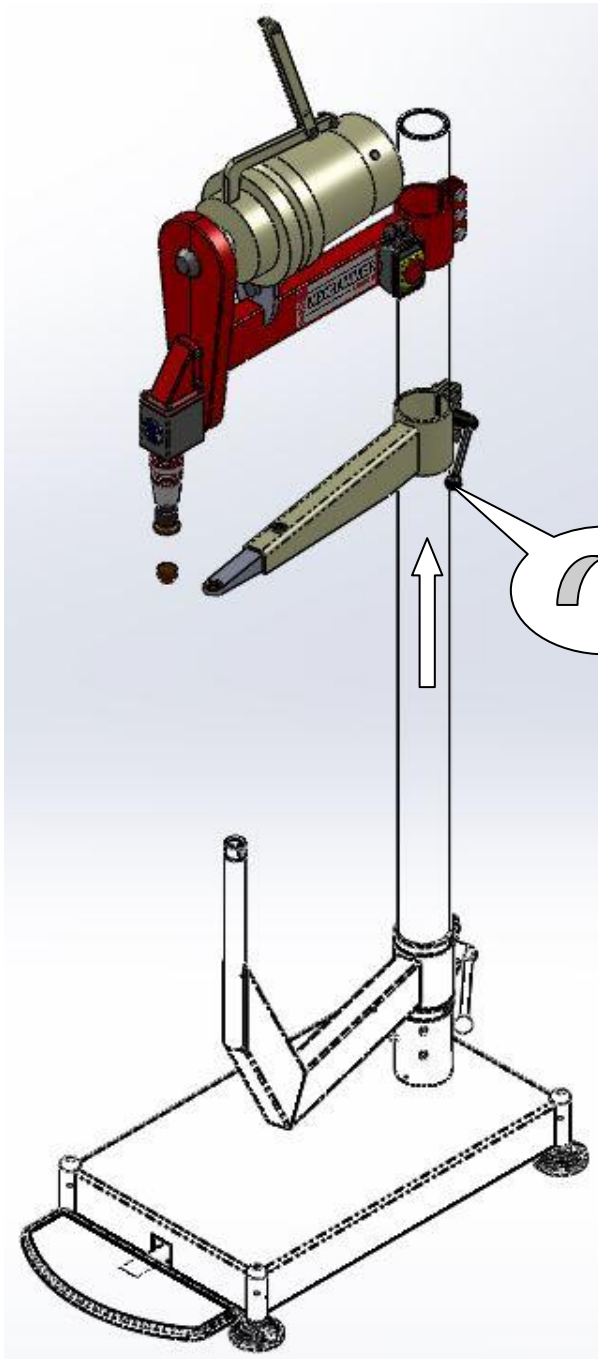


## 2 Mounting Motor Arm



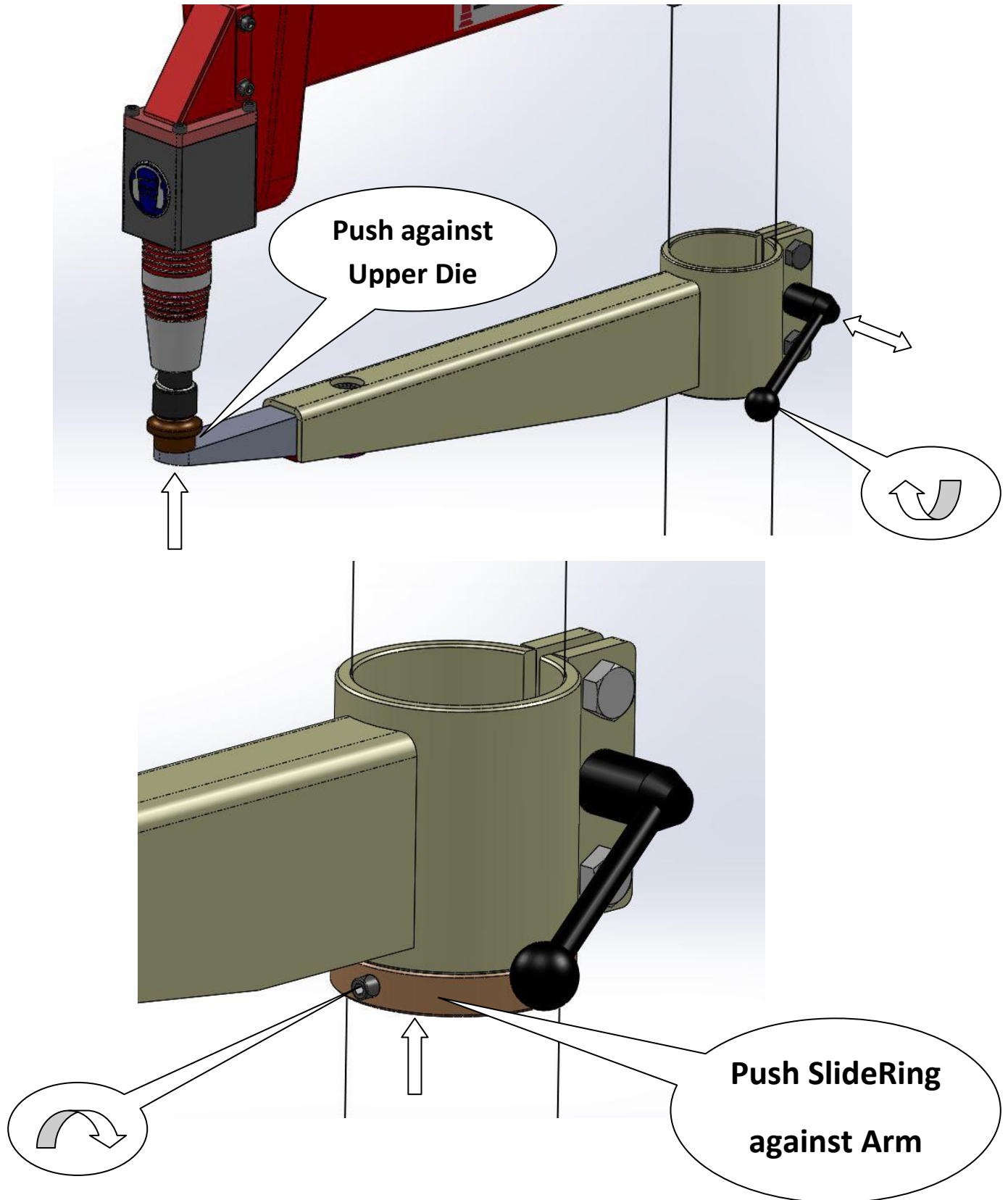


### 3 Installing Second Arm



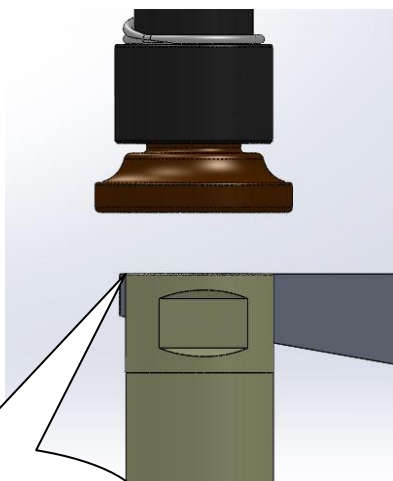
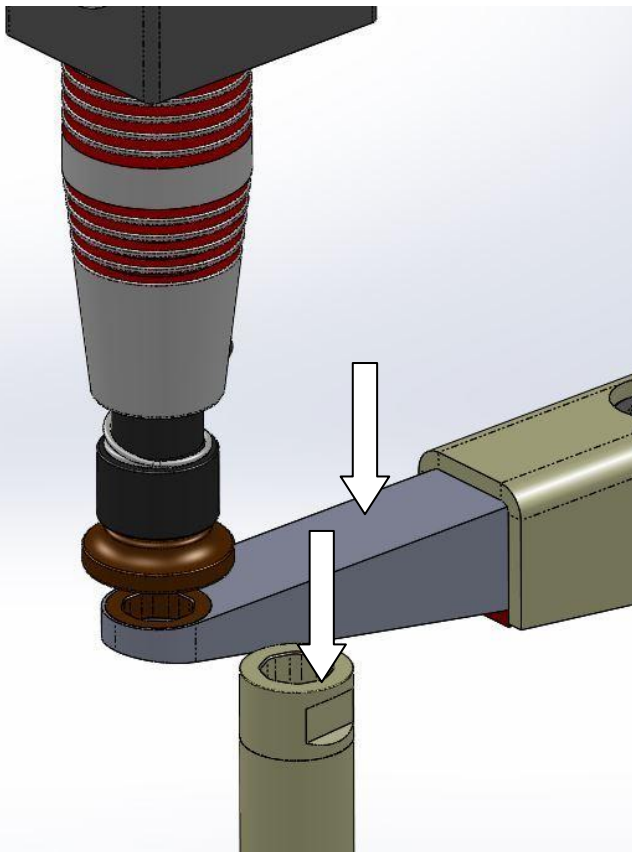


## 4 Positioning Second Arm

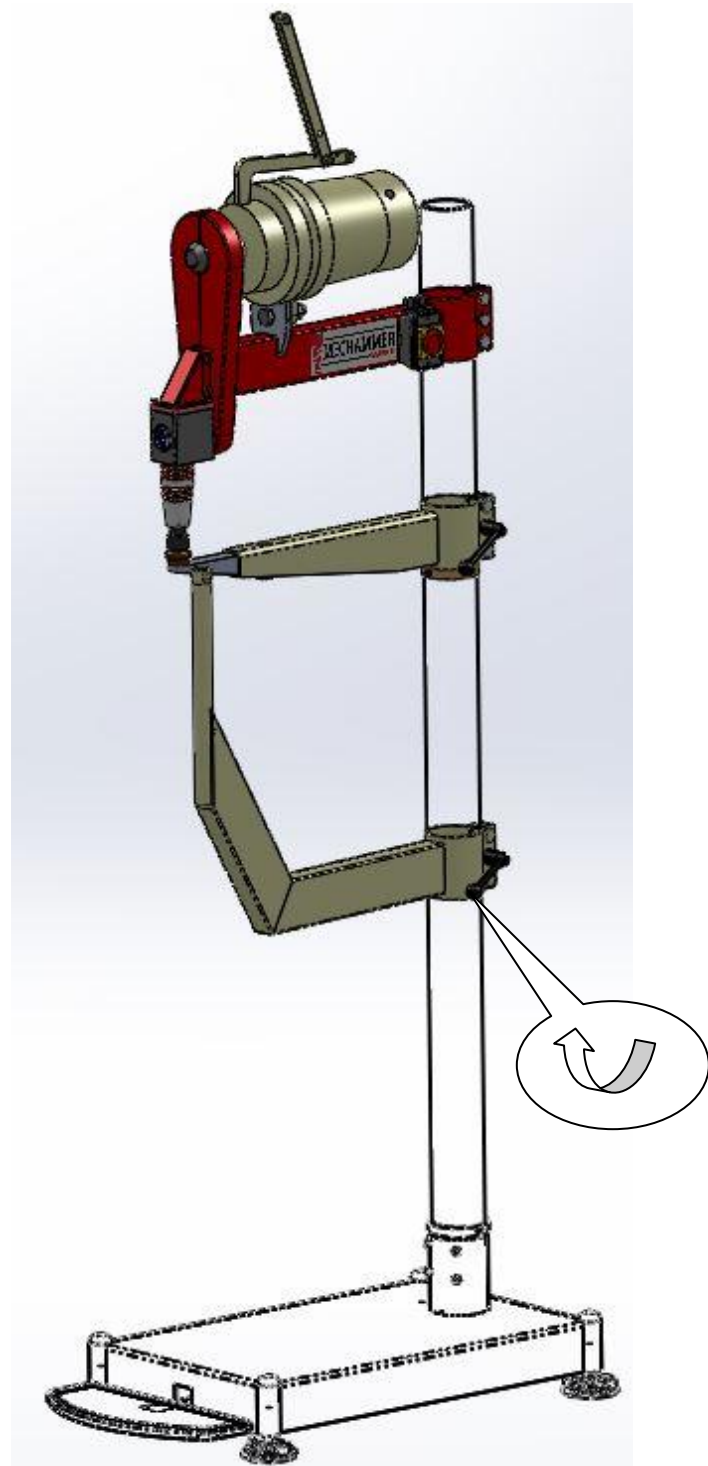




## 5 Installing First Arm

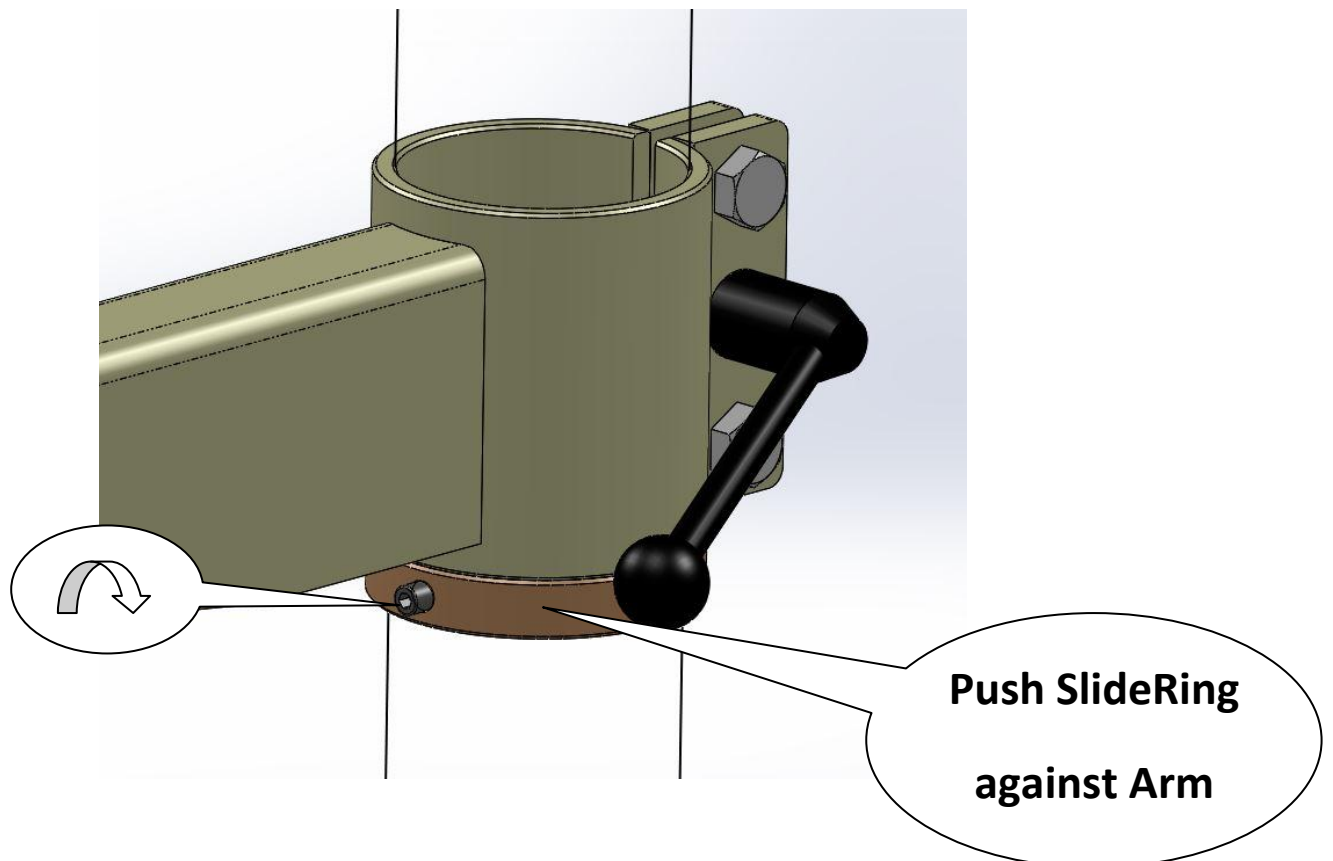
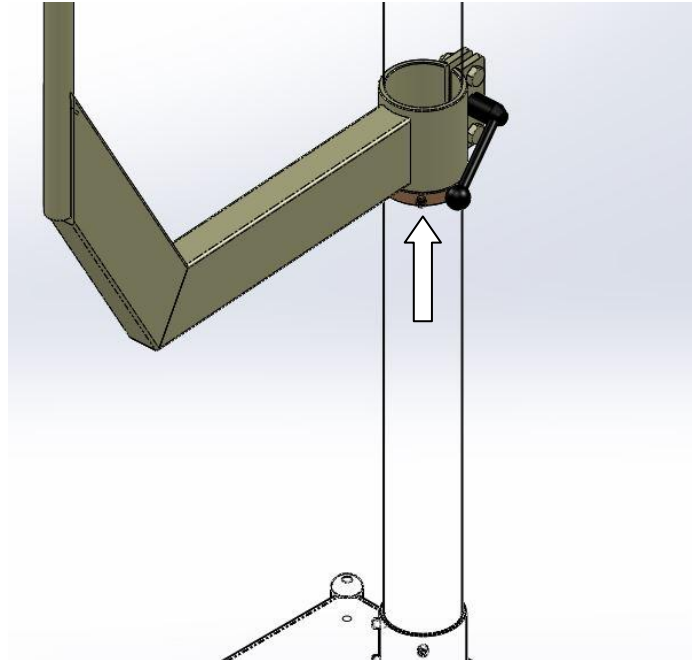


Same Level





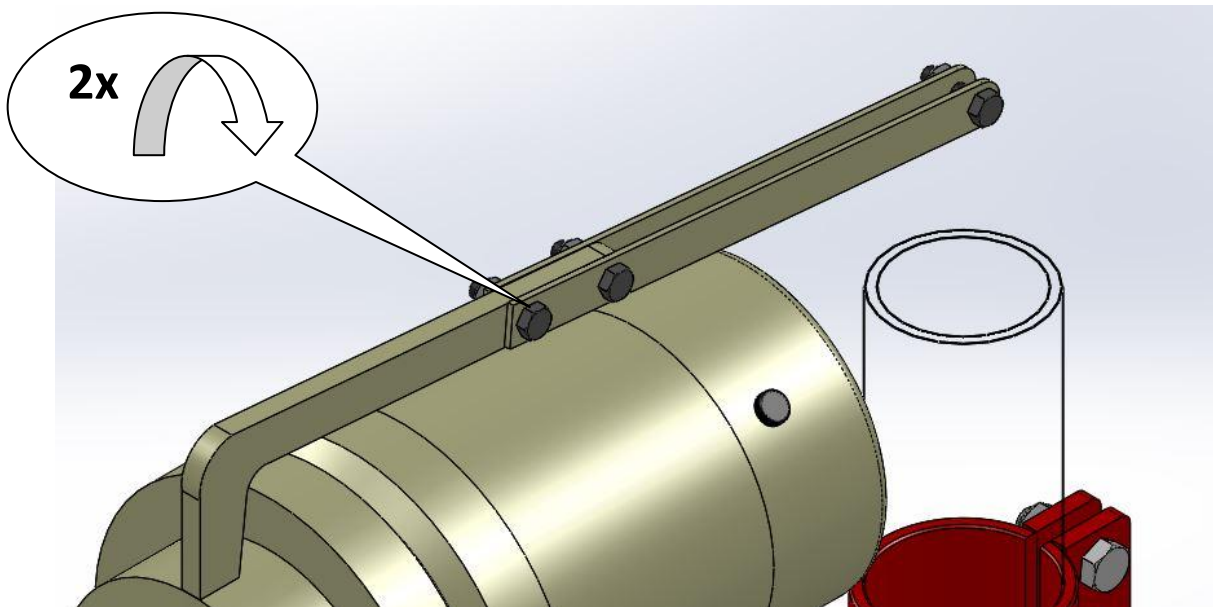
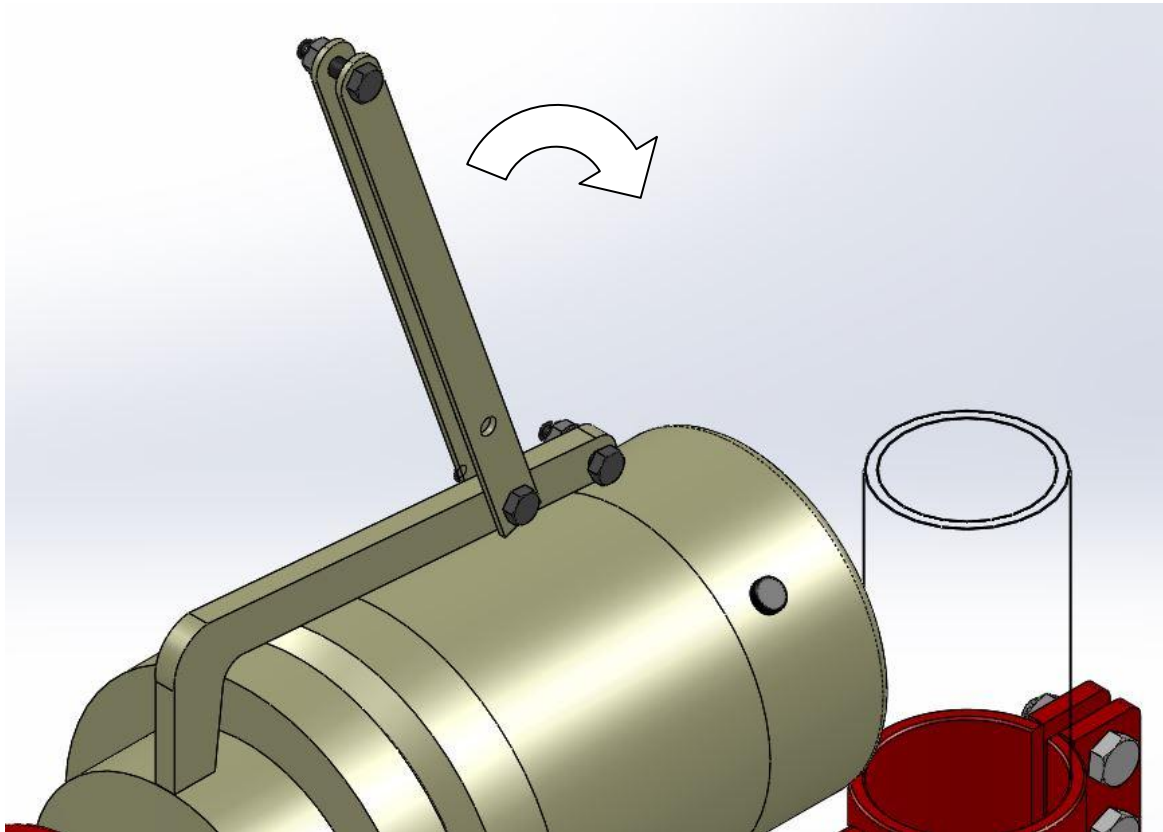
## 6 Positioning First Arm





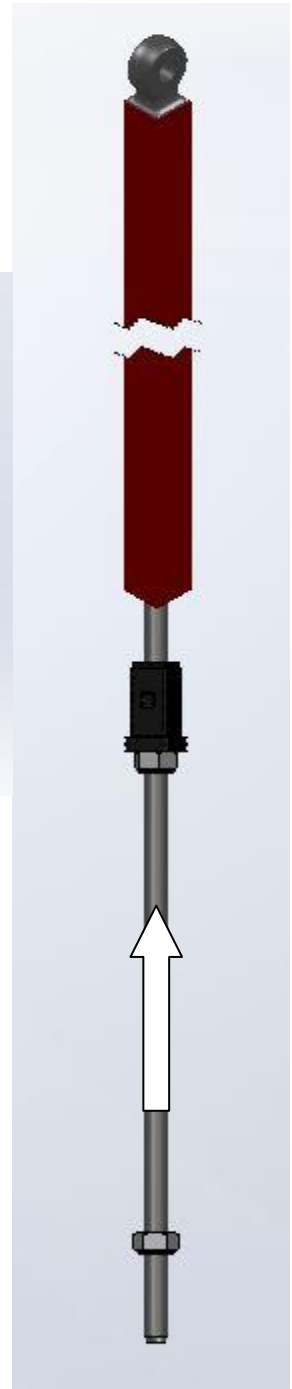
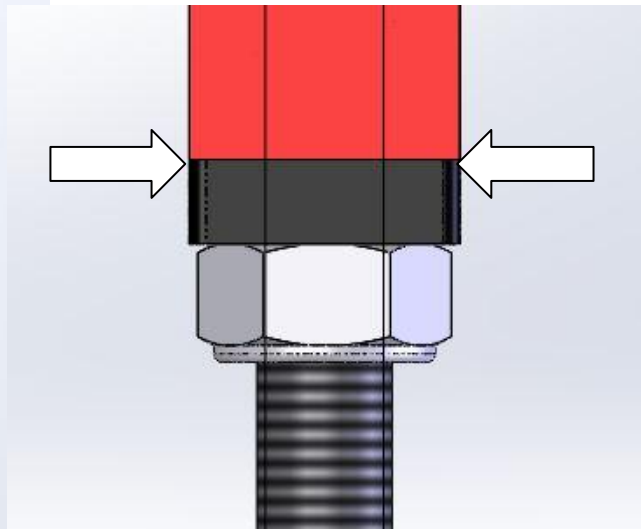


## 7 Mounting Clutcharm Lengtheners





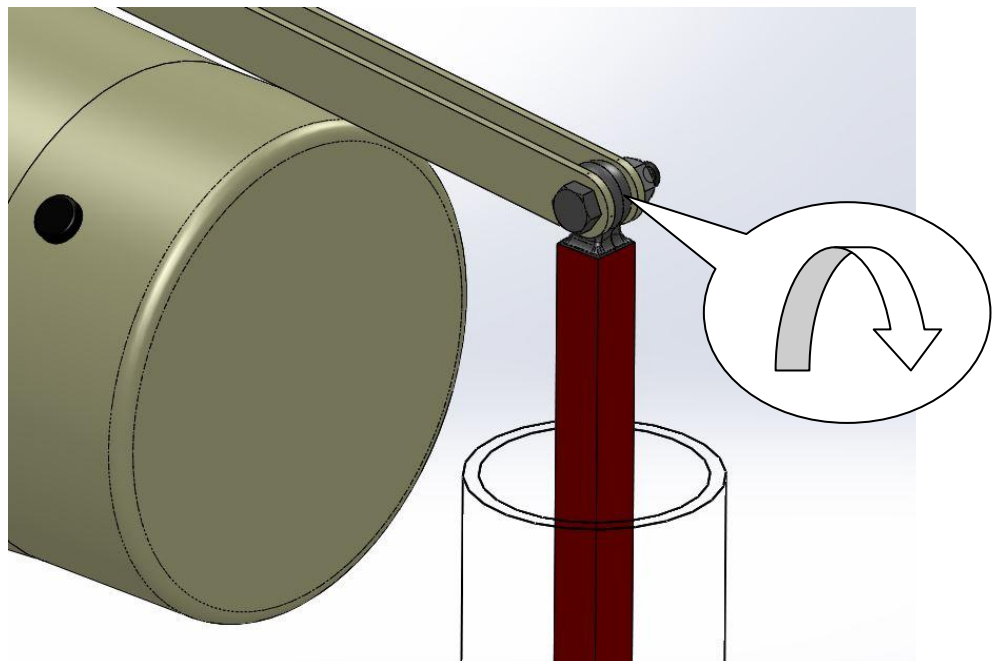
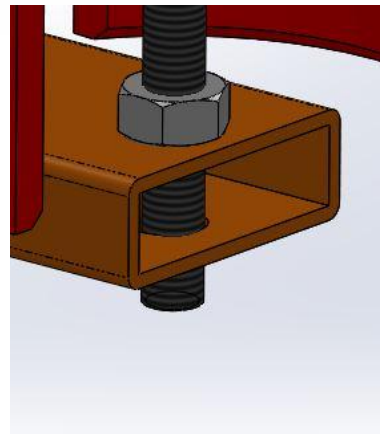
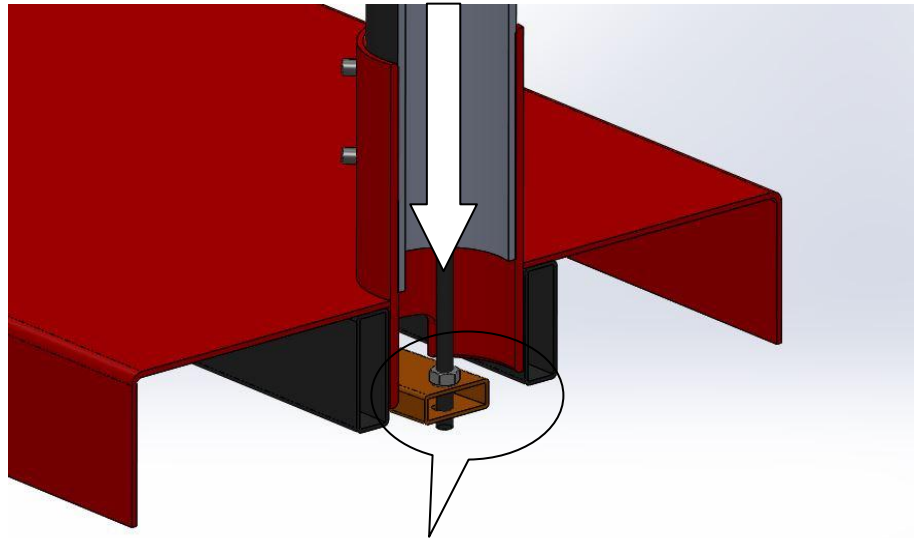
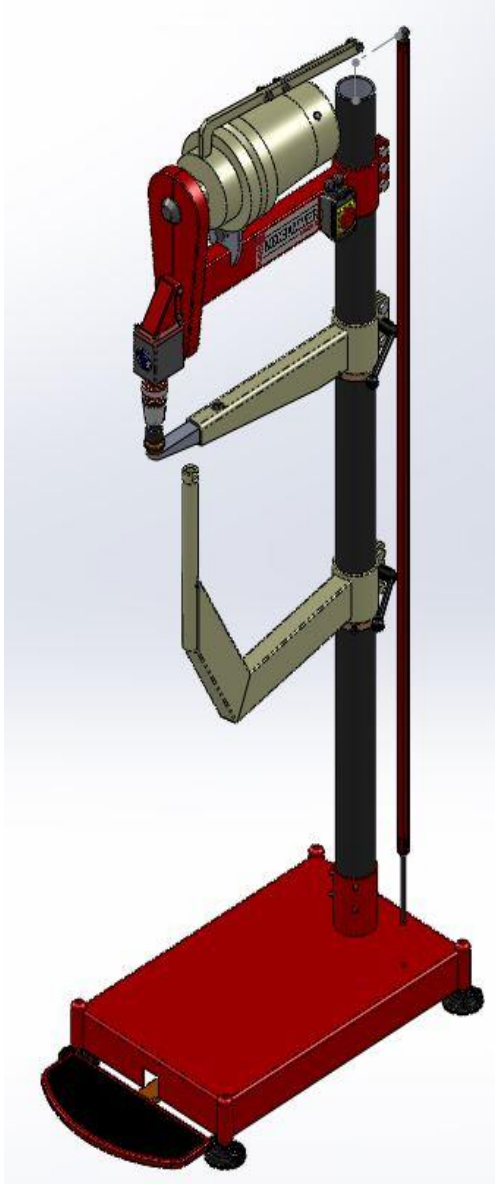
## 8 Pushrod assembly





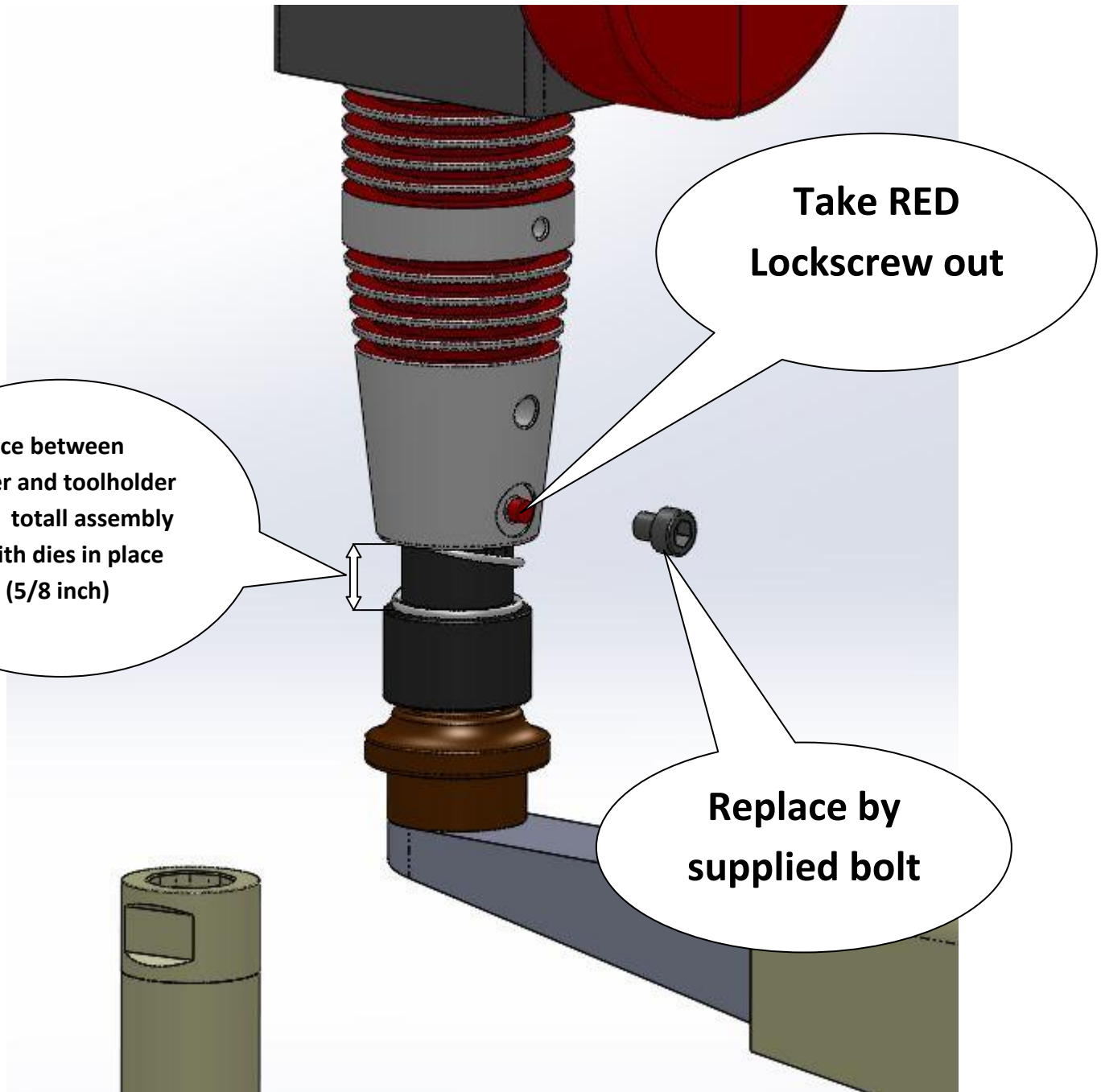


## 9 Installing Pushrod





**10 BEFORE USE:** Replace Red Lockscrew if necessary





## 11 Oil when needed with Airtool Oil

